



Building Automation System



Part#s WC-P, WC-S, WC-A



In today's buildings, the power of an innovative, easy-to-use building automation system is a **big** deal.

The Automated Logic® WebCTRL® building automation system offers an intuitive user interface and powerful tools to help facility managers keep occupants comfortable, manage energy conservation measures, identify key operational problems, and analyze the results. And, best of all, this can all be done anytime/anywhere, through a variety of Internet devices, from desktop PCs to web-enabled cell phones and tablets.

WebCTRL systems provide local to global energy management and control, and easily interface with all major electrical and mechanical subsystems in the building. With these capabilities and more, facility managers can access, configure, and manage building control systems in ways that best serve their operating needs and budget.

### Key Features and Benefits

- Powerful, comprehensive building management with, intuitive point-and-click graphical access
- Dynamic color floor plans convey a quick understanding of building conditions
- Customizable graphics, schedules, trends, reports, and alarms
- Inherent WebCTRL Environmental Index™ tool for, measuring analyzing, and comparing comfort conditions against setpoints, helping you balance comfort with efficiency
- Powerful WebCTRL Time-lapse™ graphics for analyzing and troubleshooting up to 24 hours of past building operation
- Fully compatible with Automated Logic legacy systems
- Built-in, ASHRAE Guideline 36 compliant Fault Detection and Diagnostics (FDD), to help anticipate, provide insight, and automatically respond to building issues
- Readily participates in energy rebate programs using the OpenADR® 2.0 protocol
- Optional EnergyReports™ analysis package can be added to analyze, compare, and normalize building energy consumption data over different time periods
- Optional Eco-Screen® sustainability kiosk software can be added to showcase building systems and energy efficient building features to occupants and visitors
- Easily integrates to other building systems and third party software using BACnet, Modbus®, LonWorks®, and other third party protocols



The WebCTRL® system gives you the ability to understand your building operations and analyze the results. Integrate environmental, energy, security and safety systems into one powerful management tool that allows you to reduce energy consumption, increase occupant comfort, and achieve sustainable building operations.



**AUTOMATED LOGIC**

1150 Roberts Boulevard, Kennesaw, Georgia 30144  
770-429-3000 | www.automatedlogic.com

**WE MAKE BUILDINGS BETTER.**

Next level building automation engineered to help you make smart decisions.

### Client Requirements

Server Specs: Dual core processor, 1.5 GB RAM, 10Mbps or higher LAN communications  
Supports PCs running Windows<sup>®</sup> and Apple<sup>®</sup> (Mac<sup>®</sup>) PCs running Mac OS X<sup>®</sup> and Linux<sup>®</sup>

Mobile Devices: Smart phones: Android™, iOS  
Tablets: Android, iOS, Surface™

Browsers: **A computer with this operating system**

Windows

Mac OS X  
(Apple Mac only)

Linux

### Supports these web browsers

Google™ Chrome™ v66.0 or later 1  
Internet Explorer<sup>®</sup> v11 Desktop  
Microsoft<sup>®</sup> Edge v40 or later  
Mozilla<sup>®</sup> Firefox<sup>®</sup> v60.0 or later

Safari<sup>®</sup> v11 or later 2  
Google Chrome v66.0 or later  
Mozilla Firefox v60.0 or later

Google Chrome v66.0 or later  
Mozilla Firefox v60.0 or later

### Server Requirements (server sold separately)

Specs: Dual core processor, 2G RAM, 10Mbps or higher LAN communications  
Supports PCs running Windows and Apple (Mac) PCs running Mac OS X

OS: The following operating systems in 64-bit versions:

Windows 10 Professional  
Windows Server 2014  
Windows Server 2016  
Red Hat Enterprise Linux 7.4

Windows 8.1 Professional and Enterprise  
Windows 7 Professional and Ultimate  
Ubuntu<sup>®</sup> Desktop 16.04 LTS

Database: Apache Derby (default database engine-included with purchase)  
The WebCTRL<sup>®</sup> v7.0 system supports the following and database engines are sold separately:

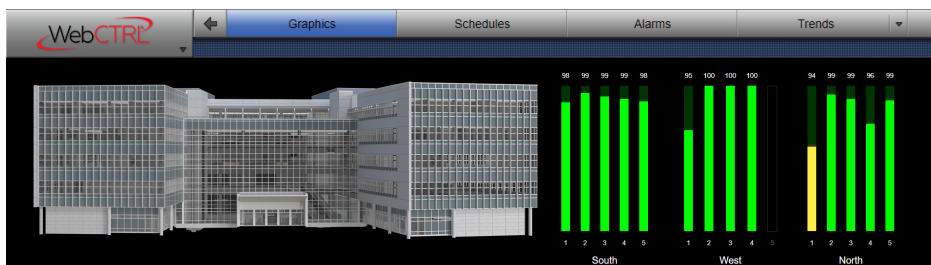
SQL Server <sup>®</sup> Express 2017, 2016, 2014	SQL Server 2017, 2016, 2014
Oracle 12c	MySQL 5.7.2
PostgreSQL 9.4 and 10	Apache Derby

Security: Supports TLS (Transport Layer Security) v1.2 with 128 bit encryption between client and WebCTRL server

Supports: Unlimited simultaneous users  
Hierarchical server configuration for very large systems  
Communication to field controllers via BACnet (TCP/IP)

Languages: International English, Brazilian Portuguese, French, French Canadian, German, Italian, Japanese, Korean, Russian, Simplified Chinese, Swedish, Thai, Traditional Chinese, Vietnamese

BACnet: Advanced Operator Workstation (B-AWS) supporting BACnet Revision 12



Automated  
Logic

